

VOICE COIL

THE PERIODICAL FOR THE LOUDSPEAKER INDUSTRY

Testbenched: EM 428 4" cone midrange



FIGURE 9: Morel EM 428 free-air impedance plot.

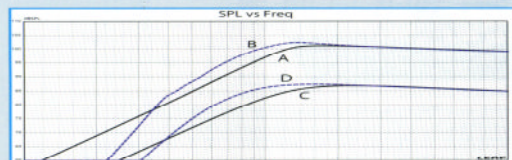


FIGURE 10: EM 428 computer box simulations (A = sealed 1 at 2.83V; B = sealed 2 at 2.83V; C = sealed 1 at 17.5V; D = sealed at 23V).

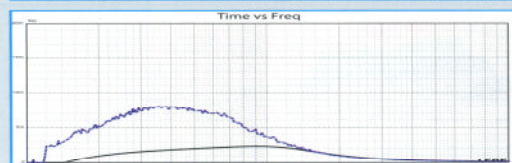


FIGURE 11: Group delay curves for the 2.83V curves in Fig. 10.

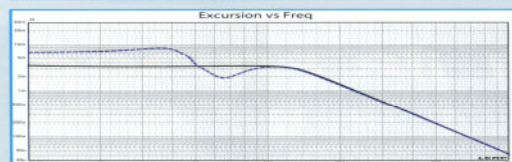


FIGURE 12: Cone excursion curves for the 17.5/23V curves in Fig. 10.

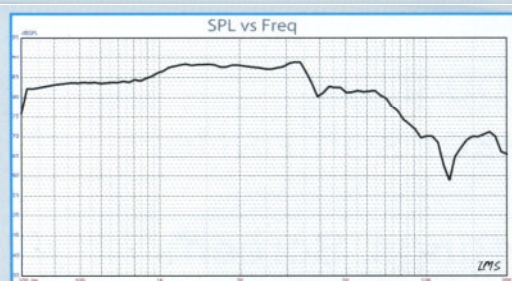


FIGURE 13: Morel EM 428 on-axis response.

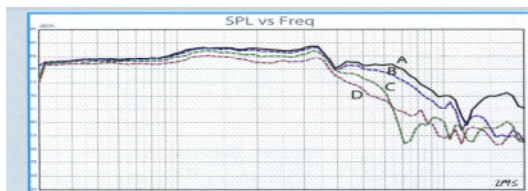


FIGURE 14: Morel EM 428 horizontal on- and off-axis frequency response (A = 0°; B = 15°; C = 30°; D = 45°).

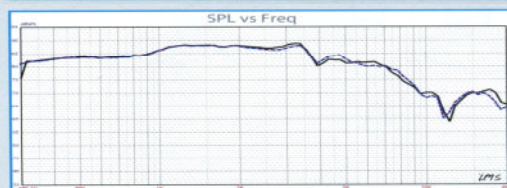


FIGURE 15: Morel EM 428 two-sample SPL comparison.

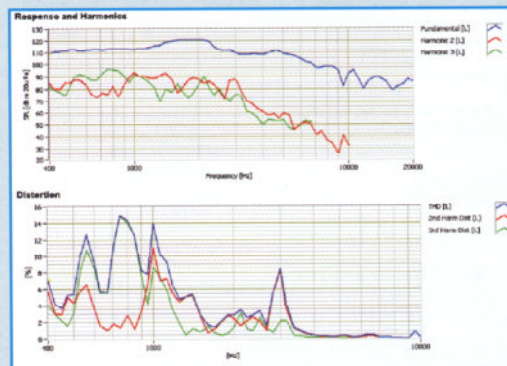


FIGURE 16: Morel EM 428 SoundCheck distortion plots.

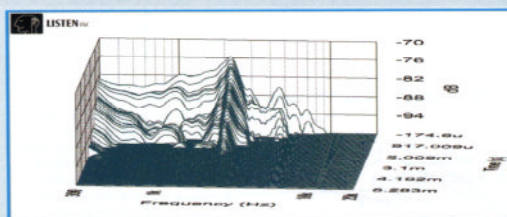


FIGURE 17: Morel EM 428 SoundCheck CSD waterfall plot.

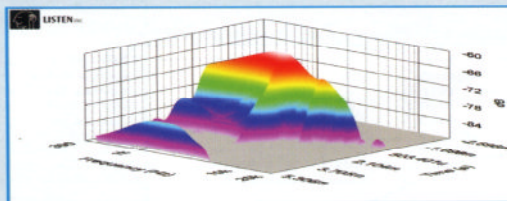


FIGURE 18: Morel EM 428 SoundCheck Wigner-Ville intensity plot.

Europe wide distribution:



www.moreurope.com

www.eltim.eu